



Photocoupler
Product Data Sheet
MOC3052 SERIES

Spec No. :DS70-2001-025
Effective Date: 04/20/2019
Revision: F

LITE-ON DCC

RELEASE

BNS-OD-FC001/A4

Photocoupler MOC305X series

1. DESCRIPTION

1.1 Features

- Isolation voltage between input and output V_{iso} : 5,000V_{rms}
- 6pin DIP photocoupler, triac driver output
- High repetitive peak off-state voltage V_{DRM} : Min. 600V
- High critical rate of rise of off-state voltage(dV/dt : MIN. 1000V / μs)
- Dual-in-line package : MOC3051, MOC3052, MOC3053
- Wide lead spacing package : MOC3051M, MOC3052M, MOC3053M
- Surface mounting package : MOC3051S, MOC3052S, MOC3053S
- Tape and reel packaging : MOC3051S-TA, MOC3052S-TA, MOC3053S-TA
MOC3051S-TA1, MOC3052S-TA1, MOC3053S-TA1
- Safety approval
UL 1577, Cert. No.E113898
CSA CA5A, Cert. No. 1020087 (CA 91533-1)
FIMKO EN/IEC 60950-1, EN/IEC 60065; Cert. No.NCS/FI 24426 M3
VDE DIN EN60747-5-2, Cert. No. 40015248
CQC GB4943.1-2011/ GB8898-2011 RoHS Compliance
- All materials be used in device are followed EU RoHS directive (No.2002/95/EC).
- ESD pass HBM 6000V/MM2000V
- MSL class1
- Halogen free option

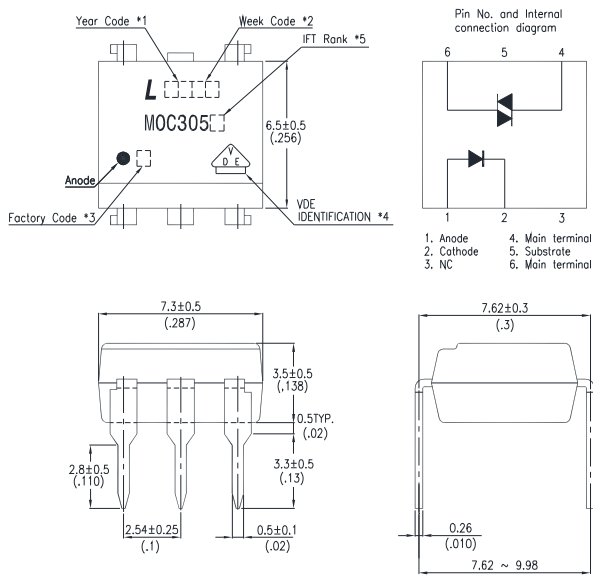
1.2 Applications

- AC Motor Drives
- AC Motor Starters
- E.M. Contactors
- Lighting Controls
- Solenoid/Valve Controls
- Solid State Relays
- Static Power Switches
- Temperature Controls

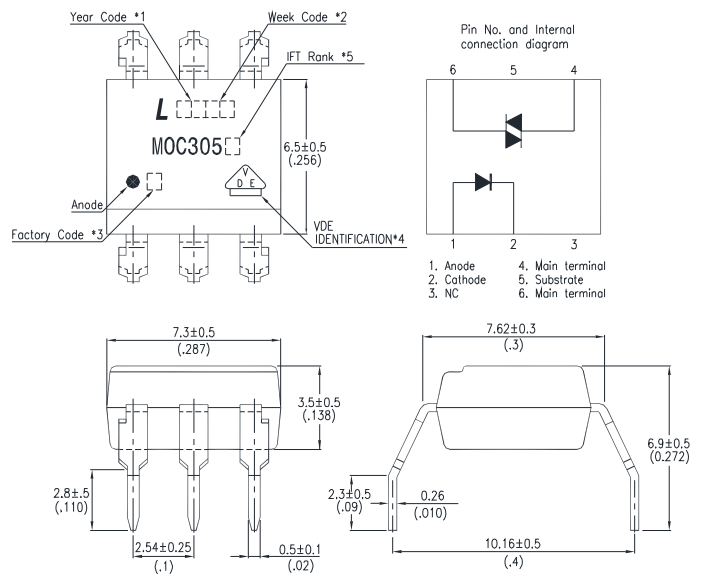
Photocoupler MOC305X series

2. PACKAGE DIMENSIONS

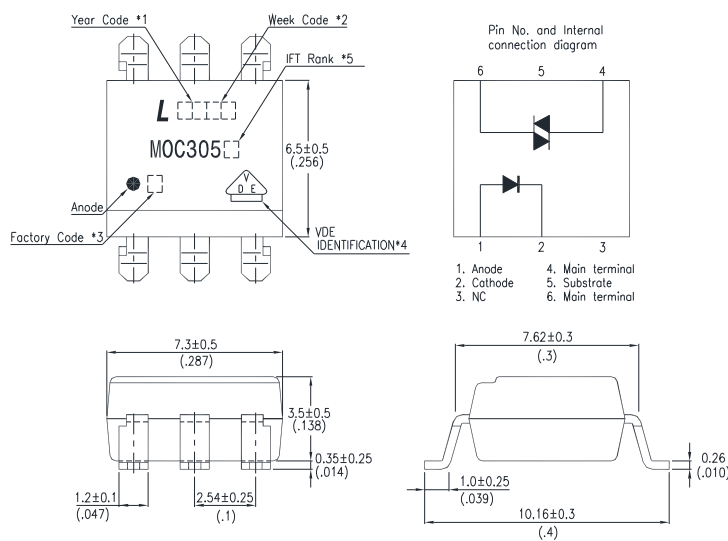
2.1 MOC305X



2.2 MOC305XM



2.3 MOC305XS



Notes :

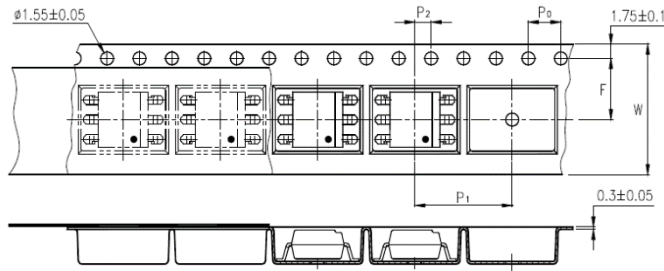
1. 2-digit year code, example : 2016 = 16
2. 2-digit work week ranging from '01' to '53'
3. Factory identification mark shall be marked (W: China-CZ, Y: Thailand)
4. VDE option
5. I_{FT} rank

* Dimensions are in Millimeters and (Inches).

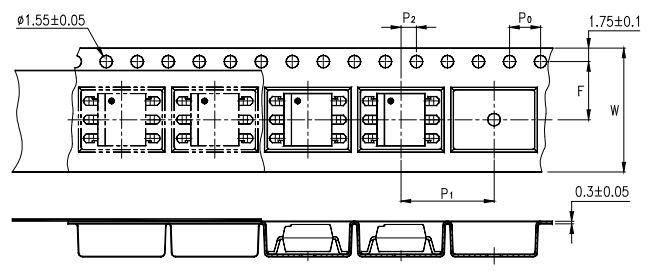
**Photocoupler
MOC305X series**

3. TAPING DIMENSIONS

3.1 MOC305XS-TA



3.2 MOC305XS-TA1



Description	Symbol	Dimension in mm (inch)
Tape wide	W	16±0.3 (0.63)
Pitch of sprocket holes	P ₀	4±0.1 (0.15)
Distance of compartment	F	7.5±0.1 (0.295)
	P ₂	2±0.1 (0.079)
Distance of compartment to compartment	P ₁	12±0.1 (0.472)

3.3 Quantities Per Reel

Package Type	MOC305XS series
Quantities (pcs)	1000

Photocoupler MOC305X series

4. RATING AND CHARACTERISTICS

4.1 Absolute Maximum Ratings at Ta=25°C

	Parameter	Symbol	Rating	Unit
Input	Forward Current	I_F	50	mA
	Reverse Voltage	V_R	6	V
	Junction Temperature	T_J	125	°C
	Power Dissipation	P	100	mW
Output	Off-State Output Terminal Voltage	V_{DRM}	600	V
	Peak Repetitive Surge Current (PW=1ms, 120pps)	I_{TSM}	1	A
	Junction Temperature	T_J	125	°C
	Out Power Dissipation	P_O	300	mW
	Total Power Dissipation	P_{tot}	330	mW
1.	Isolation Voltage	V_{iso}	5000	V_{rms}
	Operating Temperature	T_{opr}	-40 ~ +110	°C
	Storage Temperature	T_{stg}	-55 ~ +150	°C
2.	Soldering Temperature	T_{sol}	260	°C

1. AC For 1 Minute, R.H. = 40 ~ 60%

Isolation voltage shall be measured using the following method.

- (1) Short between anode and cathode on the primary side and between collector and emitter on the secondary side.
- (2) The isolation voltage tester with zero-cross circuit shall be used.
- (3) The waveform of applied voltage shall be a sine wave.

2. For 10 Seconds

Photocoupler MOC305X series

4.2 Recommended Operating Conditions (Note)

Characteristics		Symbol	Min.	Typ.	Max.	Unit
Supply Voltage		V_{AC}	-	-	240	Vac
Forward Current	MOC3051	I_F	22.5	25	30	mA
	MOC3052		15	20	30	mA
	MOC3053		7.5	10	30	mA
Operating Temperature		T_{opr}	-25	-	85	°C

Note: Recommended operating conditions are given as a design guideline to obtain expected performance of the device. Additionally, each item is an independent guideline respectively. In developing designs using this product, please confirm specified characteristics shown in this document.

Photocoupler MOC305X series

4.3 Electrical Optical Characteristics at Ta=25°C

Parameter		Symbol	Min.	Typ.	Max.	Unit	Test Condition	
Input	Forward Voltage	V_F	—	1.2	1.4	V	$I_F=20\text{mA}$	
	Reverse Current	I_R	—	0.05	10	μA	$V_R=6\text{V}$	
Output	1 Peak Blocking Current, Either Direction	I_{DRM}	—	—	100	nA	$V_{\text{DRM}} = 600\text{V}$	
	Peak On-State Voltage, Either Direction	V_{TM}	—	—	3.0	V	$I_{\text{TM}}=100\text{ mA Peak}$	
	2 Critical rate of Rise of Off-State Voltage	dv/dt	1000	—	—	V/ μs	$V_{\text{in}}=240\text{Vrms}$	
Couple	Led Trigger Current, Current Required to Latch Output, Either Direction	MOC3051 MOC3052 MOC3053	I_{FT}	—	—	15	mA	Main Terminal Voltage = 3V
				—	—	10		
				—	—	5		
	Holding Current, Either Direction		I_H	—	250	—	μA	

*1. Test voltage must be applied within dv/dt rating.

*2. This is static dv/dt. Commutating dv/dt is a function of the load-driving thyristor(s) only.

Photocoupler MOC305X series

5. CHARACTERISTICS CURVES (TYPICAL PERFORMANCE)

Fig.1 Forward Current vs. Ambient Temperature

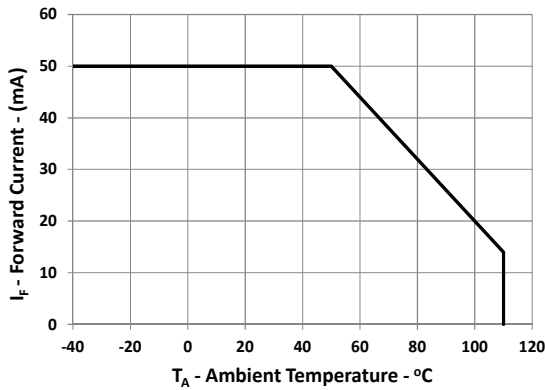


Fig.2 On-state Current vs. Ambient Temperature

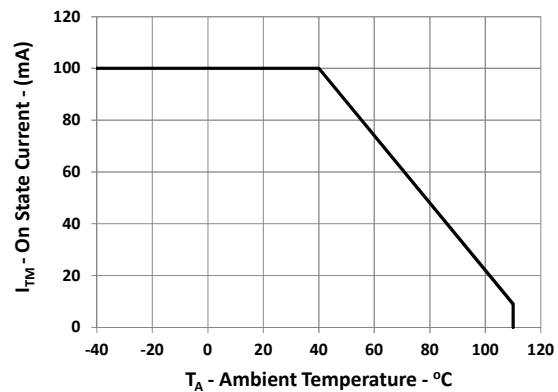


Fig.3 Normalized Trigger Current vs Ambient Temperature

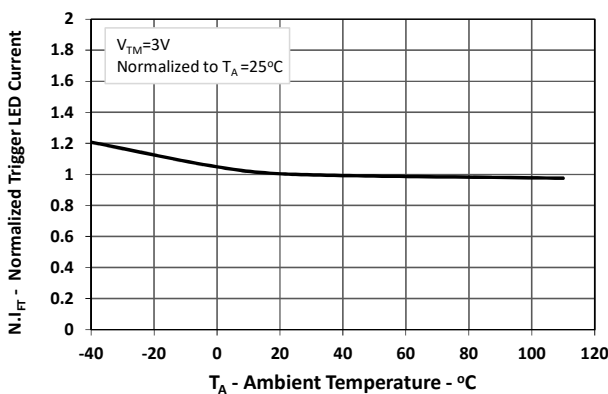


Fig.4 Forward Current vs. Forward Voltage

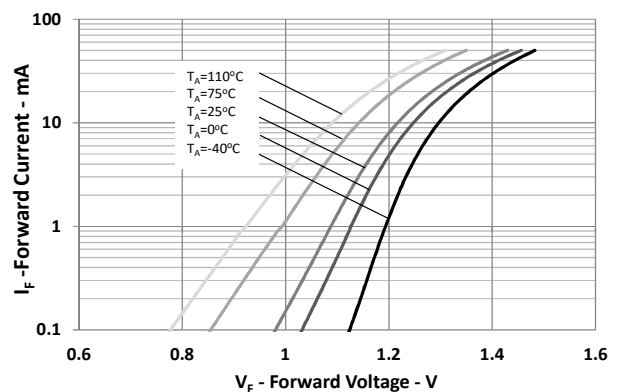


Fig.5 Normalized On-state Voltage vs Ambient Temperature

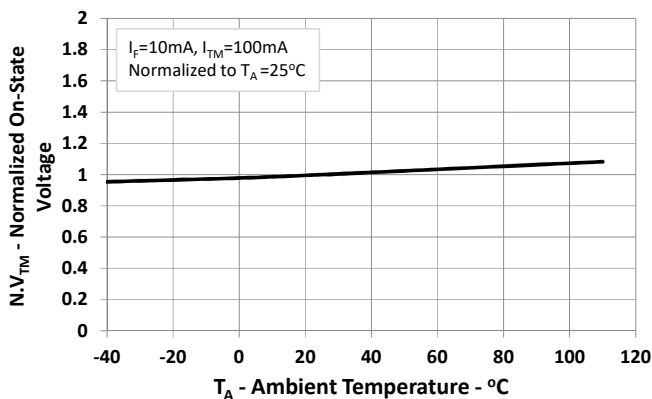
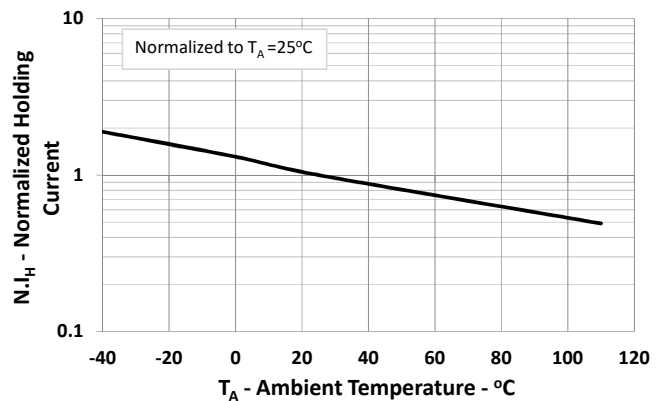


Fig.6 Normalized Holding Current vs Ambient Temperature



Photocoupler MOC305X series

Fig.7 Off-state Current vs Ambient Temperature

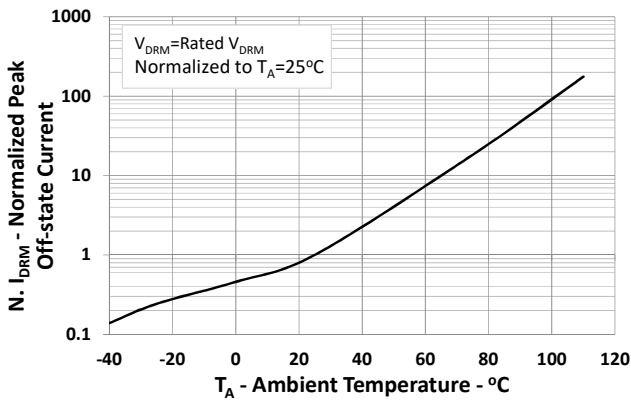
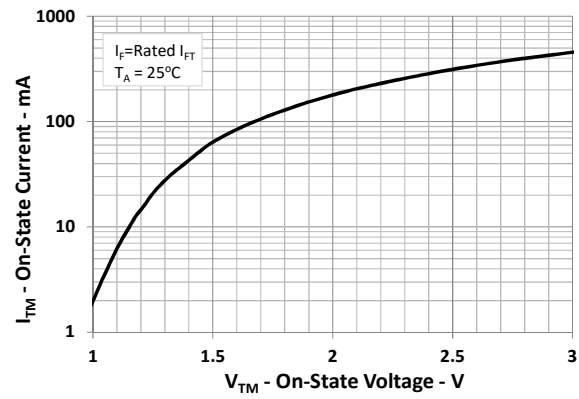
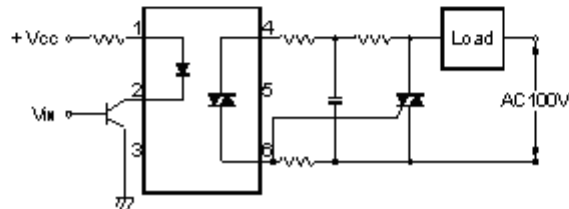


Fig.8 On-state Current vs On-state Voltage



Basic Operation Circuit
Medium/High Power Triac Drive Circuit



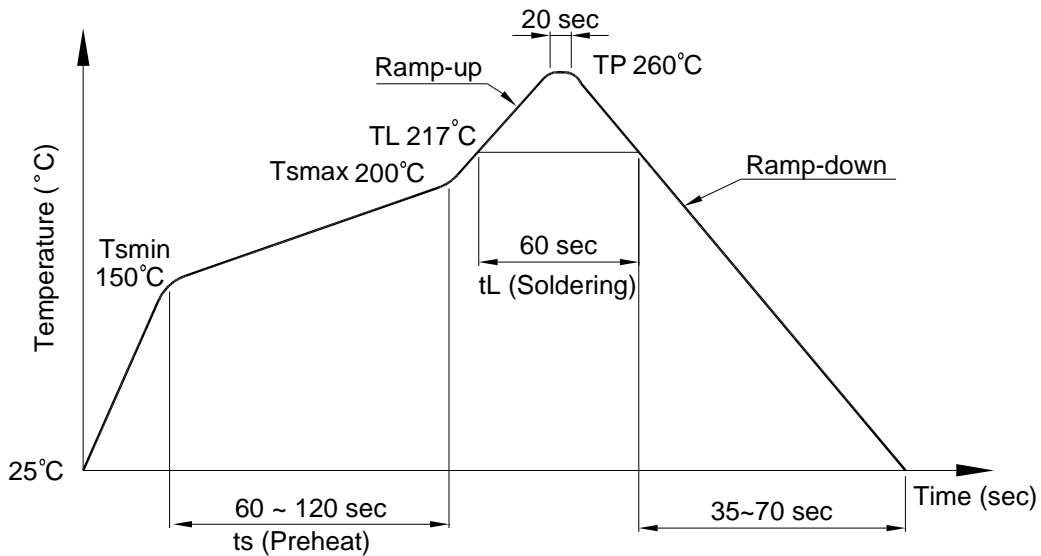
Photocoupler MOC305X series

6. TEMPERATURE PROFILE OF SOLDERING

6.1 IR Reflow soldering (JEDEC-STD-020E compliant)

One time soldering reflow is recommended within the condition of temperature and time profile shown below. Do not solder more than three times.

Profile item	Conditions
Preheat	
- Temperature Min (T_{Smin})	150°C
- Temperature Max (T_{Smax})	200°C
- Time (min to max) (ts)	90±30 sec
Soldering zone	
- Temperature (T_L)	217°C
- Time (t_L)	60 sec
Peak Temperature (T_P)	260°C
Ramp-up rate	3°C / sec max.
Ramp-down rate	3~6°C / sec



**Photocoupler
MOC305X series**

6.2 Wave soldering (JEDEC22A111 compliant)

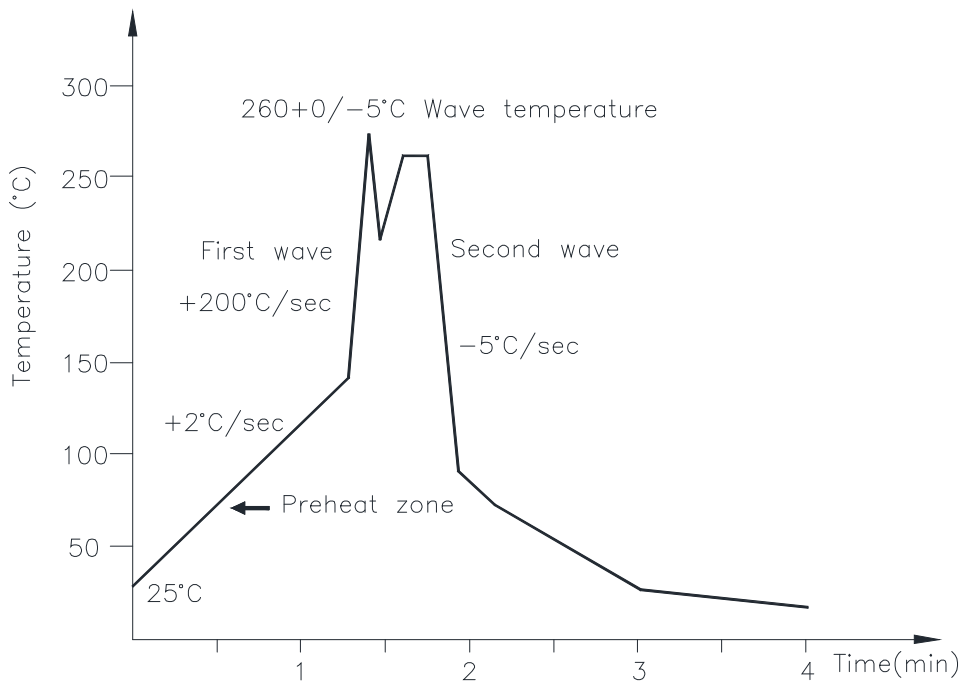
One time soldering is recommended within the condition of temperature.

Temperature: $260 \pm 0 / -5^{\circ}\text{C}$

Time: 10 sec.

Preheat temperature: 25 to 140°C

Preheat time: 30 to 80 sec.



6.3 Hand soldering by soldering iron

Allow single lead soldering in every single process. One time soldering is recommended.

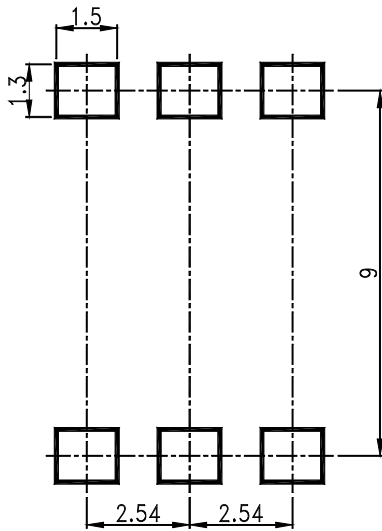
Temperature: $380 \pm 0 / -5^{\circ}\text{C}$

Time: 3 sec max.

**Photocoupler
MOC305X series**

7. RRECOMMENDED FOOT PRINT PATTERNS (MOUNT PAD)

Unit: mm



**Photocoupler
MOC305X series**

8. NAMING RULE

MOC305(X)(1)-(2)-G

DEVICE PART NUMBER (MOC305X)

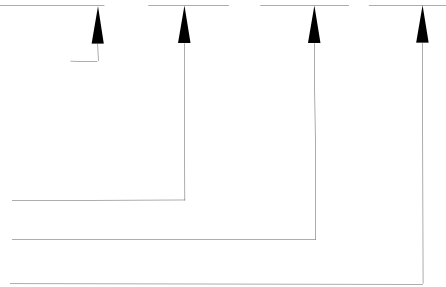
Please refer to Electrical Optical Characteristics Table on Page 6

(1) FORM TYPE (S, M or none)

(2) TAPING TYPE (TA, TA1)

(3) Halogen free

Example : MOC3051S-TA1



MOC305(X)(1)(2)-V-G

DEVICE PART NUMBER (MOC305X)

Please refer to Electrical Optical Characteristics Table on Page 6

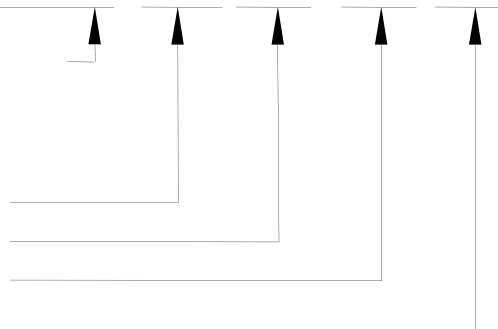
(1) FORM TYPE (S, M or none)

(2) TAPING TYPE (TA, TA1)

(3) VDE option

(4) Halogen free

Example : MOC3051STA1-V-G



9. NOTES

- LiteOn is continually improving the quality, reliability, function or design and LiteOn reserves the right to make changes without further notices.
- The products shown in this publication are designed for the general use in electronic applications such as office automation equipment, communications devices, audio/visual equipment, electrical application and instrumentation.
- For equipment/devices where high reliability or safety is required, such as space applications, nuclear power control equipment, medical equipment, etc, please contact our sales representatives.
- When requiring a device for any "specific" application, please contact our sales in advice.
- If there are any questions about the contents of this publication, please contact us at your convenience.
- The contents described herein are subject to change without prior notice.
- Immerge unit's body in solder paste is not recommended.